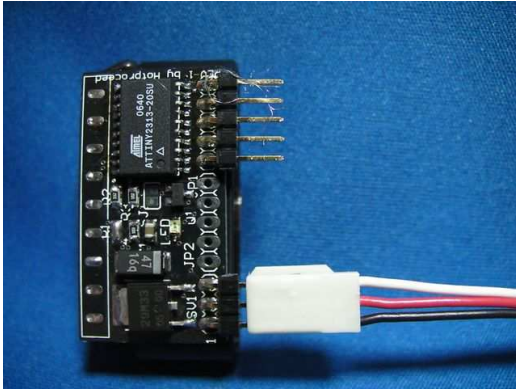


How to set up REV-1 and Heart to Heart

Connect with REV-1 and RCB-3 or RCB-3J.

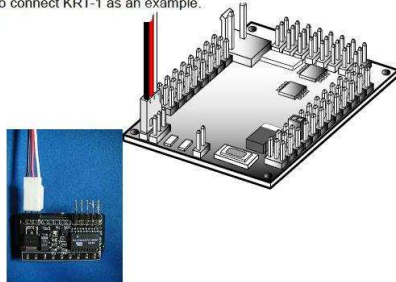
Turn on RCB.



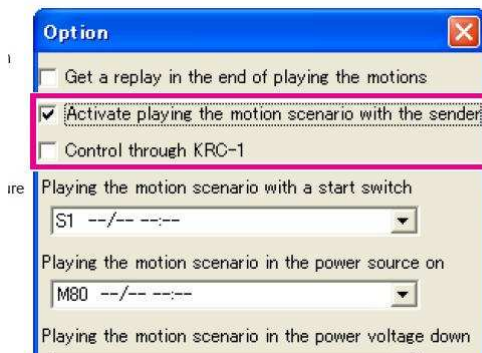
Setting of wireless control

RCB-3J offers you 2 ways for wireless control.
One is using the KRC-1 wireless control set or conventional type of sender, which connects KRT-1, KRT-2 or personal computer to KRT-1 or KRT-3.
The other is expanding the command of conventional wireless control.
Here, the former way would be explained first.

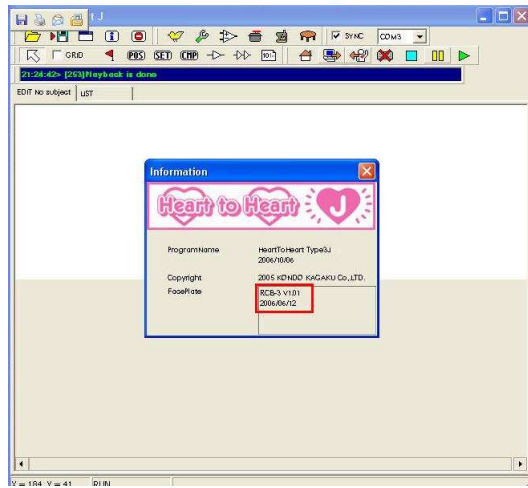
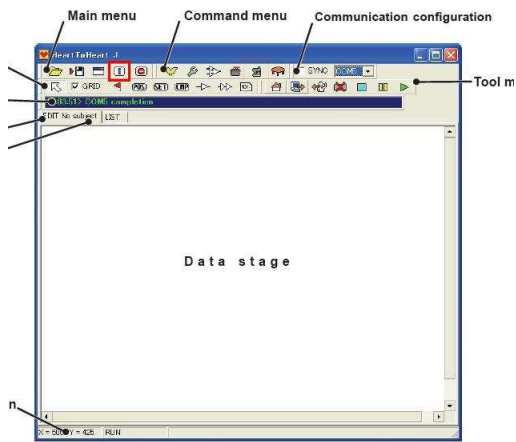
- 1 Connect receiver to RCB-3J.
The figure below illustrates how to connect KRT-1 as an example.
Here KRC-1 is used as a sender.



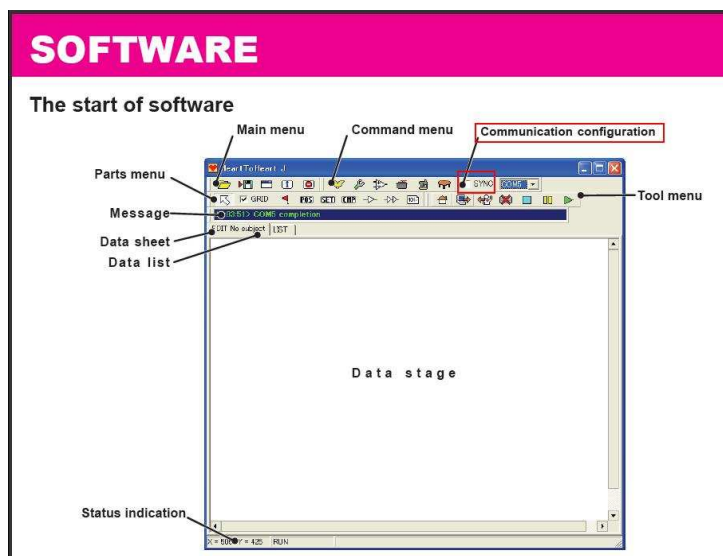
- 1) Open Heart2Heart
- 2) First of all, please open the option window on software
- 3) Exclude a check of "Control through KRC-1" of "Option"



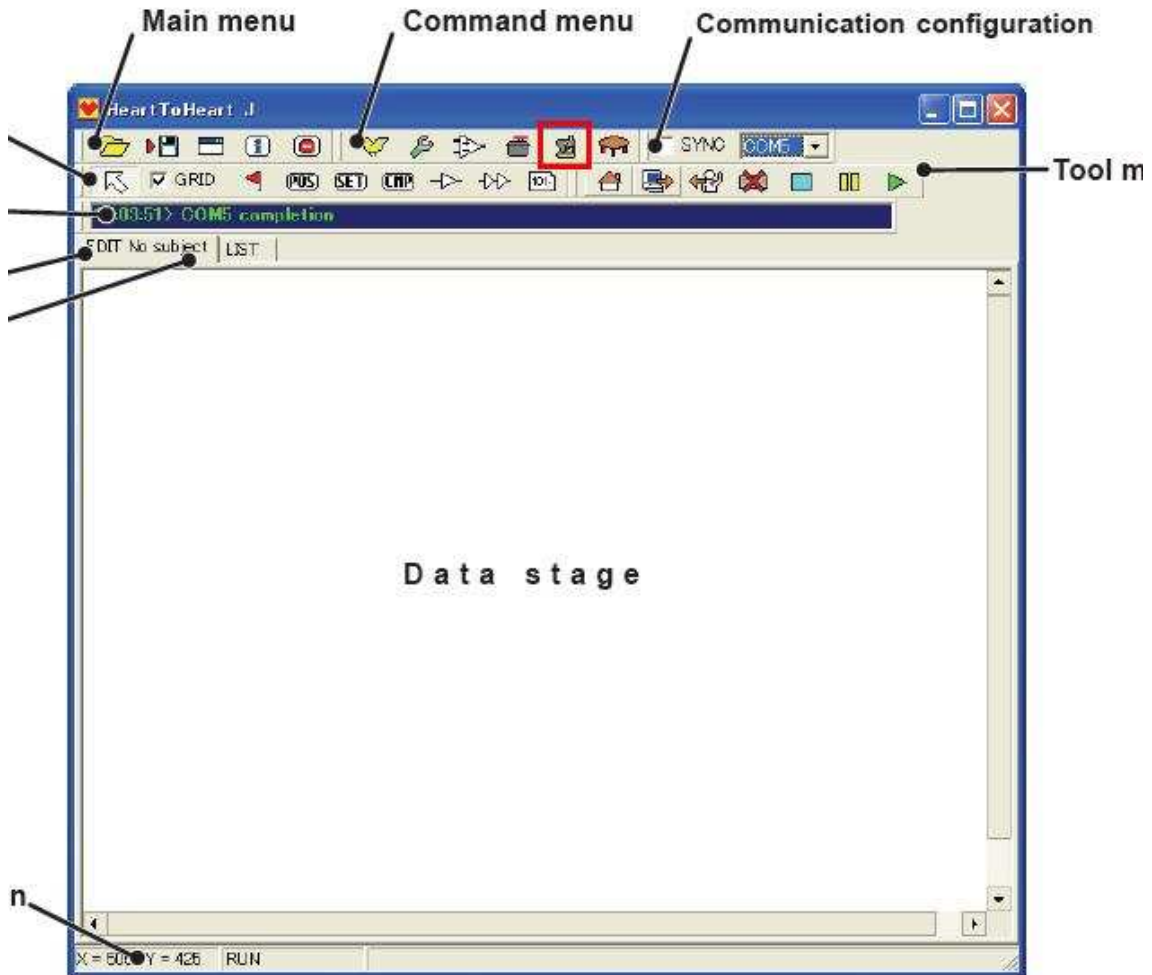
Check the reception.



4) Exclude a check of "Communication Configuration (SYNC)"

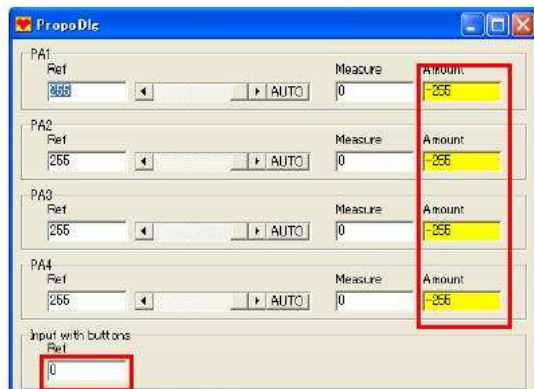


5) Open the receiver button



Receiver button

In this window you can monitor a signal from the receiver when a transmitter was used. Though, in case of using a usual button-type (command) transmitter, the 2 byte signal was expanded more, and all analog quantities can be allotted to 1 byte signal.



6) Check the number changes in the red frame.
The right red frame supports to the analog stick.

The lower red frame supports the button of the controller.

When you press the button, the number changes from 1 to 4096.

When you separate the button, the number changes to 0.

When the number appears expect 0 even you separate the button, it is wrong.

Confirm from the beginning.

After that, click the SYNC and follow the manual of KONDO. And reopen the motion setting.